

A modern kitchen with a dark wood ceiling, stone wall, and white cabinetry. The kitchen features a long island with a dark countertop and a wooden top section. There are two pendant lights hanging from the ceiling. The background shows a stone wall and a large arched window. A wooden stool is visible in the foreground.

**Joinwell**

**A guide to planning  
your kitchen.**

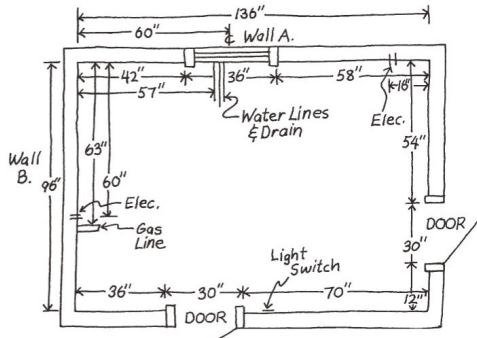
**The art of everyday living.**

# Doing up your new kitchen

Installing a new kitchen can be quite an involved affair. These tips are aimed to help and guide you through it.

— **The first step** is to make a **plan of the room** as accurately as possible, with all accesses properly marked including the height and width of all windows and doors.

Please take note of walls that are not at 90 degrees and mark their actual angle on the plan.



— **When taking measurements you must indicate whether:**

- this floor is the finished floor level,
- the walls are finished,
- there are patterned tiles especially if these follow the line of the cupboards,
- you intend to have a false ceiling with designs, especially if these require centering over the hob or island,
- the doors have jambs,
- the walls join at 90 degrees or at an angle,
- there is skirting either installed or to come,
- the floor is level (as this can be an issue with old houses),
- the walls are flat (as this can be an issue with old houses).

— **Bring these measurements with you for your first appointment.** It is not possible to give you an estimate without the room measurements, and the more accurate the plan, the more accurate the estimate will be.

— Our **design executives** will then **lay out the kitchen** to your preference giving you their advice as to the layout,

design and material. **They have a wealth of experience** and you can be confident in the advice they give you. You will need to spend some hours to get this right so be sure to make an appointment so we can give you our undivided attention.

— Our staff can also help you choose the kitchen tops as well as the appliances, although you may choose to purchase these elsewhere.

You will be given a **full layout and quotation** on your choice. You can change this at any time until ordering.

— **Once you are happy with the design, type of kitchen and budget you can order the kitchen.** There are standard conditions which are indicated on the quotation/order and which will be brought to your attention when you are signing for them. Our staff would have informed you of these conditions at the design stage before you submit your order, so there will not be any surprises.



— **We will visit your home to double check the measurements after the kitchen is ordered** and inform you if slight changes are required, after which an **electrical and plumbing plan will be provided.**

— **Delivery takes about three months from the date of Order.**

Once your kitchen is ordered you can start with all the trades. We can only install the kitchen once the floor is laid, the walls are plastered and painted, the gypsum ceiling installed and electrical and plumbing points are complete.

**Our own full time installers will assemble the kitchen.**

They will check the parts and indicate to you whether there are any issues. We want you to be very happy with your purchase and will do our best to ensure that this happens.

**Check out our guarantee – our reputation depends on it.**

If you have ordered the appliances through us, **our supplier should hook up the appliances to the electrical points within two to three days.**

If you have ordered the top through us, **our suppliers should measure and install the top within three weeks** of the kitchen being installed.

Please note that we do not supply electrical and plumbing services.

## Your appointment for a design and quotation:

Date:

Time:

---

---

Your design executive:

---

On arrival please ask at reception and you will be seen to immediately. In case you wish to change your appointment do not hesitate to call us on 2278 2000.